



MIAMI-DADE COUNTY
BUILDING CODE COMPLIANCE OFFICE (BCCO)
PRODUCT CONTROL DIVISION

MIAMI-DADE COUNTY, FLORIDA
METRO-DADE FLAGLER BUILDING
140 WEST FLAGLER STREET, SUITE 1603
MIAMI, FLORIDA 33130-1563
(305) 375-2901 FAX (305) 372-6339

NOTICE OF ACCEPTANCE (NOA)

www.maimidade.gov/buildingcode

Glass America
2590 North Powerline Road
Pompano Beach, FL 33069

SCOPE:

This NOA is being issued under the applicable rules and regulations governing the use of construction materials. The documentation submitted has been reviewed by Miami-Dade County Product Control Division and accepted by the Board of Rules and Appeals (BORA) to be used in Miami Dade County and other areas where allowed by the Authority Having Jurisdiction (AHJ).

This NOA shall not be valid after the expiration date stated below. The Miami-Dade County Product Control Division (In Miami Dade County) and/or the AHJ (in areas other than Miami Dade County) reserve the right to have this product or material tested for quality assurance purposes. If this product or material fails to perform in the accepted manner, the manufacturer will incur the expense of such testing and the AHJ may immediately revoke, modify, or suspend the use of such product or material within their jurisdiction. BORA reserves the right to revoke this acceptance, if it is determined by Miami-Dade County Product Control Division that this product or material fails to meet the requirements of the applicable building code.

This product is approved as described herein, and has been designed to comply with the Florida Building Code, including the High Velocity Hurricane Zone.

DESCRIPTION: Series "5000" Aluminum Window Wall System – L.M.I.

APPROVAL DOCUMENT: Drawing No. **06-100**, titled "Glass America Series 5000 Aluminum Storefront", Sheets 1 through 4 of 4, dated 03/22/06, prepared by EngCo, Inc., signed and sealed by Pedro De Figueiredo, P.E., bearing the Miami-Dade County Product Control Renewal stamp with the Notice of Acceptance number and expiration date by the Miami-Dade County Product Control Division.

MISSILE IMPACT RATING: Large and Small Missile Impact Resistant

LABELING: Each unit shall bear a permanent label with the manufacturer's name or logo, city, state and following statement: "Miami-Dade County Product Control Approved", unless otherwise noted herein.

RENEWAL of this NOA shall be considered after a renewal application has been filed and there has been no change in the applicable building code negatively affecting the performance of this product.

TERMINATION of this NOA will occur after the expiration date or if there has been a revision or change in the materials, use, and/or manufacture of the product or process. Misuse of this NOA as an endorsement of any product, for sales, advertising or any other purposes shall automatically terminate this NOA. Failure to comply with any section of this NOA shall be cause for termination and removal of NOA.

ADVERTISEMENT: The NOA number preceded by the words Miami-Dade County, Florida, and followed by the expiration date may be displayed in advertising literature. If any portion of the NOA is displayed, then it shall be done in its entirety.

INSPECTION: A copy of this entire NOA shall be provided to the user by the manufacturer or its distributors and shall be available for inspection at the job site at the request of the Building Official. This NOA renews NOA # **04-0318.02** and consists of this page 1 and evidence pages E-1 and E-2, as well as approval document mentioned above.

The submitted documentation was reviewed by **Carlos M. Utrera, P.E.**



[Signature]
 4/17/08

NOA No. 08-0219.01
Expiration Date: May 15, 2013
Approval Date: May 8, 2008
Page 1

NOTICE OF ACCEPTANCE: EVIDENCE SUBMITTED

A. DRAWINGS

1. Manufacturer's die drawings and sections.
2. Drawing No. **06-100**, titled "Glass America Series 5000 Aluminum Storefront", Sheets 1 through 4 of 4, dated 03/22/06, prepared by EngCo, Inc., signed and sealed by Pedro De Figueiredo, P.E.

B. TESTS

1. Test reports on
 - 1) Air Infiltration Test, per TAS 202-94
 - 2) Uniform Static Air Pressure Test, Loading per TAS 202-94
 - 3) Water Resistance Test, per TAS 202-94
 - 4) Large Missile Impact Test, TAS 201-94
 - 5) Cyclic Loading Test, per TAS 203-94along with installation diagram of aluminum glazed Window wall system marked-up by Fenestration Testing Laboratory, Test Report No. **FTL 02158 (3614), FTL 02160 (3616) and FTL 02068 (3573)**, all dated 12-10-02, signed and sealed by Joseph C. Chan, P.E. (These test reports have been revised by addendum letter clarifying shear block length, issued by Fenestration Testing lab dated April 14, 2003)
2. Test reports on
 - 1) Air Infiltration Test, per TAS 202-94
 - 2) Uniform Static Air Pressure Test, Loading per TAS 202-94
 - 3) Water Resistance Test, per TAS 202-94
 - 4) Large Missile Impact Test, TAS 201-94
 - 5) Cyclic Loading Test, per TAS 203-94along with installation diagram of aluminum glazed Window wall system marked-up by American Testing Lab of South Florida, Test Report No. **ATL -0819.01-03**, dated 01-27-04, signed and sealed by William R. Mehner, P.E.
"Evidence submitted under NOA # 04-0318.02"

C. CALCULATIONS

1. Anchor calculations and structural analysis, complying with FBC-2004, prepared by EngCo, Inc., dated 5/23/06, signed and sealed by Pedro De Figueiredo, P.E.
Complies with ASTM E1300-02
2. Anchor Calculations and structural analysis, dated 02-03-04 and last revised on 04-08-04, prepared by prepared by Eng. Inc., signed and sealed Pedro De Figueiredo, P. E.
3. Anchor Calculations and structural analysis, dated 02-28-03 and last revised on 04-22-03, prepared by prepared by Eng. Inc., signed and sealed Pedro De Figueiredo, P. E.
"Evidence submitted under NOA # 04-0318.02"

 4/17/08

Carlos M. Utrera, P.E.

Product Control Examiner
NOA No. 08-0219.01

Expiration Date: May 15, 2013

Approval Date: May 8, 2008

NOTICE OF ACCEPTANCE: EVIDENCE SUBMITTED

D. QUALITY ASSURANCE

1. Miami Dade Building Code Compliance Office (BCCO).

E. MATERIAL CERTIFICATIONS

1. Notice of Acceptance No. **07-1116.04** issued to E.I. DuPont DeNemours & Co., Inc. for their "**DuPont SentryGlas ® Plus**" dated 01/03/08, expiring on 01/14/12.
2. Notice of Acceptance No. **06-0216.06** issued to Solutia Inc. for their "**Saflex III G Clear or colored Interlayer**" dated 05/04/06, expiring on 05/21/11.
3. Notice of Acceptance No. **04-0115.01** issued to Viracon, Inc. for their "**Viracon HRG-2**", dated 02/12/04, expiring on 02/12/09.

F. STATEMENT

1. Statement letter of code conformance and no financial interest issued by EngCo, Inc., dated 03/23/06, signed and sealed by Pedro De Figueiredo, P.E.

G. OTHER

1. Notice of Acceptance No. **04-0318.02**, issued to Glass America, approved on 04/29/04 and expiring on 05/15/08.

 4/17/08

Carlos M. Utrera, P.E.
Product Control Examiner
NOA No. 08-0219.01

Expiration Date: May 15, 2013

Approval Date: May 8, 2008

INDEX:

- SHEET 1 of 4 - GENERAL NOTES AND FRAMING COMPONENTS
- SHEET 2 of 4 - ALLOWABLE MULLION LOADS TABLES 1, 2, 3 & 4 AND TYPICAL UNIT ELEVATION
- SHEET 3 of 4 - TYPICAL FRAME ANCHORAGE LAYOUT, GLAZING CONFIGURATIONS AND LOAD TABLE 6, ANCHOR SELECTION TABLE 5
- SHEET 4 of 4 - SECTION DETAILS AND FRAME ASSEMBLY

GENERAL NOTES:

1- CODE: THIS PRODUCT HAS BEEN TESTED AND DESIGNED IN ACCORDANCE WITH THE FLORIDA BUILDING CODE 2004 EDITION - (HIGH VELOCITY SECTION).

2- DEFINITION: THIS PRODUCT IS AN ALUMINUM FIXED TYPE WINDOW WITH LARGE MISSILE IMPACT RESISTANT LAMINATED GLASS.

3- POSTING:

*GLASS AMERICA - 5000 SERIES - IMPACT
GLASS AMERICA
POMPANO BEACH - FLORIDA
DADE COUNTY PRODUCT CONTROL APPROVED*

4- DESIGN LOADS: WIND LOADS MUST BE CALCULATED, AS PER ASCE 7-98, BY A PROFESSIONAL ARCHITECT OR ENGINEER FOR EACH SPECIFIC PROJECT. THE CALCULATED DESIGNED PRESSURE MUST NOT EXCEED THE ALLOWABLE APPROVED PRESSURE ON THIS PRODUCT APPROVAL.

5- MATERIAL: ALL ALUMINUM PARTS TO BE 6063-T5, 6063-T6 OR 6005-T5 ALLOYS AS INDICATED AND GLAZING TO BE LAMINATED IMPACT RESISTANT GLASS AS SPECIFIED ON THIS APPROVAL.

6- FASTENERS: ASSEMBLY SCREWS AND ANCHORS SHALL BE AS SPECIFIED IN THIS CURRENT SET OF DRAWINGS.

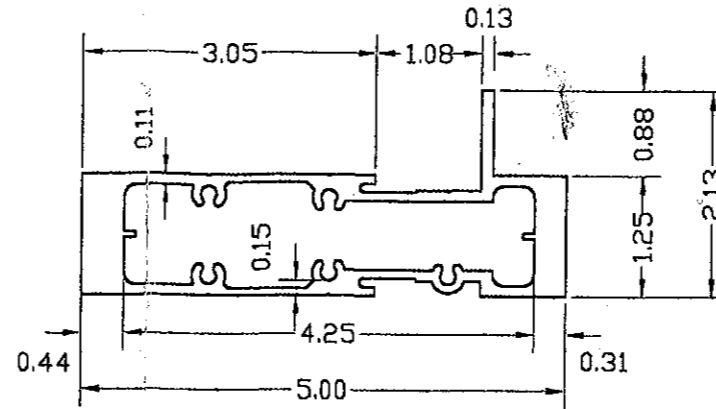
7- USE: IT SHALL BE THE RESPONSIBILITY OF THE CONTRACTOR, ARCHITECT OR ENGINEER OF RECORD TO VERIFY THE FOLLOWING:

7.1- THE STABILITY OF THE STRUCTURE WHERE THE UNIT IS TO BE ATTACHED INSURING PROPER ANCHORAGE.

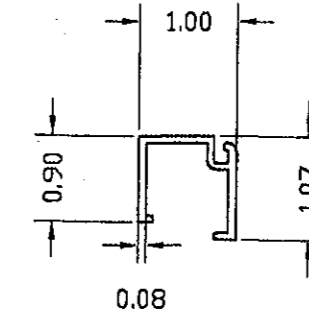
7.2- THE SITE SPECIFIC PROJECT CRITERIA, SUCH AS BUT NOT LIMITED TO, LOCAL CODE REQUIREMENTS, DESIGNED PRESSURES ETC.

7.3- THAT THIS APPROVAL IS ADEQUATE TO THE SPECIFIC PROJECT.

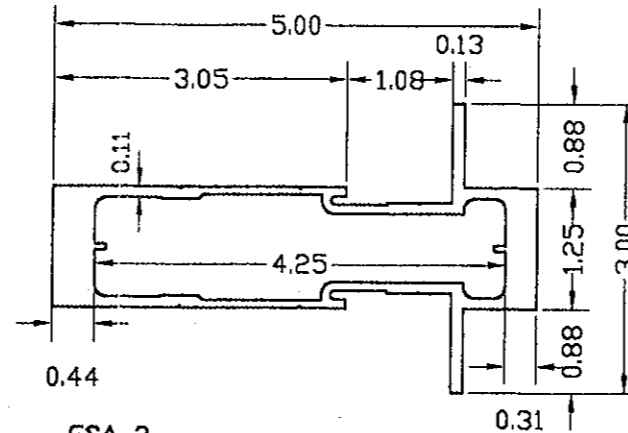
FRAMING COMPONENTS



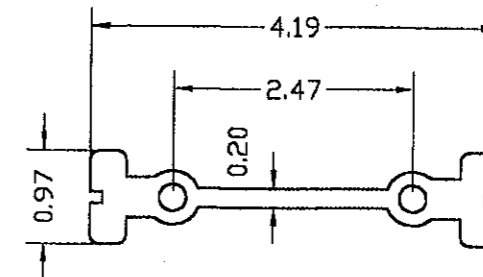
GSA-1
PERIMETER FRAMING
ALLOY: 6063-T5



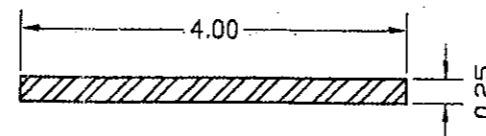
GSA-3
GLAZING STOP
ALLOY: 6063-T5



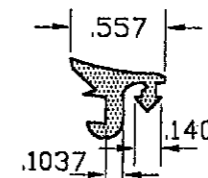
GSA-2
INTERMEDIATE MULLION SECTION
ALLOY: 6063-T6



GSA-4
SHEAR BLOCK OR REINFORCEMENT
ALLOY: 6005-T5



ST-1 (2X REQUIRED)
STEEL REINFORCEMENT
ASTM A36



GSA-5
EPDM GASKET

MANUFACTURER:
Glass America

2590 N. POWERLINE RD.
POMPANO BEACH
FLORIDA - 33069
TEL: (954) 968-5222
FAX: (954) 968-5288

PRODUCT:
**Glass America
Series 5000**

ALUMINUM STOREFRONT

Engineering:
EngCo Inc.
CA 8116
6971 W. Sunrise Blvd. 104
Plantation, FL 33313
Tel.: (954) 585-0304
Fax: (954) 585-0305

APR 03 2006

Pedro De Figueiredo, PE
PE 52609

DRAFTING:
PK DRAFTING & MORE

MIAMI-DADE APPROVAL

PRODUCT RENEWED
as complying with the Florida
Building Code
Acceptance No. 08-0219-01
Expiration Date 05/13/2013
By
Miami-Dade Product Control
Division

Date: 3/22/06
Scale: 1:3/8
Design by: PPMF

Drawing Number
06-100

Sheet
1 of 4

TABLE 1 - NO REINFORCEMENT
DESIGN LOAD CAPACITY IN PSF (EXT./INT.)
(SEE INSTRUCTIONS)

		MODULE HEIGHT						
		36	48	60	72	84	96	108
MODULE WIDTH	36	100	100	100	100	100	100	100
	42	100	100	100	100	100	100	94
	48	100	100	100	100	100	100	84

MAXIMUM ALLOWABLE MODULE: 48X108

TABLE 2 - GSA-2 W/ (2) ST1 REINFORCEMENT (FULL LENGTH)
MULLION DESIGN LOAD CAPACITY IN PSF (EXT./INT.)
(SEE INSTRUCTIONS)

		MODULE HEIGHT									
		36	48	60	72	84	96	108	120	132	144
MODULE WIDTH	48	100	100	100	100	100	100	100	100	68	61
	54	100	100	100	100	100	100	100	100	62	55
	60	100	100	100	100	100	100	100	91	57	51
	72	100	100	100	90	77	68	60	54	49	45

MAXIMUM ALLOWABLE MODULE: 72X144

TABLE 3 - GSA-2 W/ GAS-4 REINFORCEMENT (FULL LENGTH)
MULLION DESIGN LOAD CAPACITY IN PSF (EXT./INT.)
(SEE INSTRUCTIONS)

		MODULE HEIGHT						
		36	48	60	72	84	96	108
MODULE WIDTH	48	100	100	100	100	100	100	100
	54	100	100	100	100	100	100	100
	60	100	100	100	100	100	100	100

MAXIMUM ALLOWABLE MODULE: 60X108

TABLE 4 - GSA-1 - JAMB MULLION
MULLION DESIGN LOAD CAPACITY IN PSF (EXT./INT.)
(SEE INSTRUCTIONS)

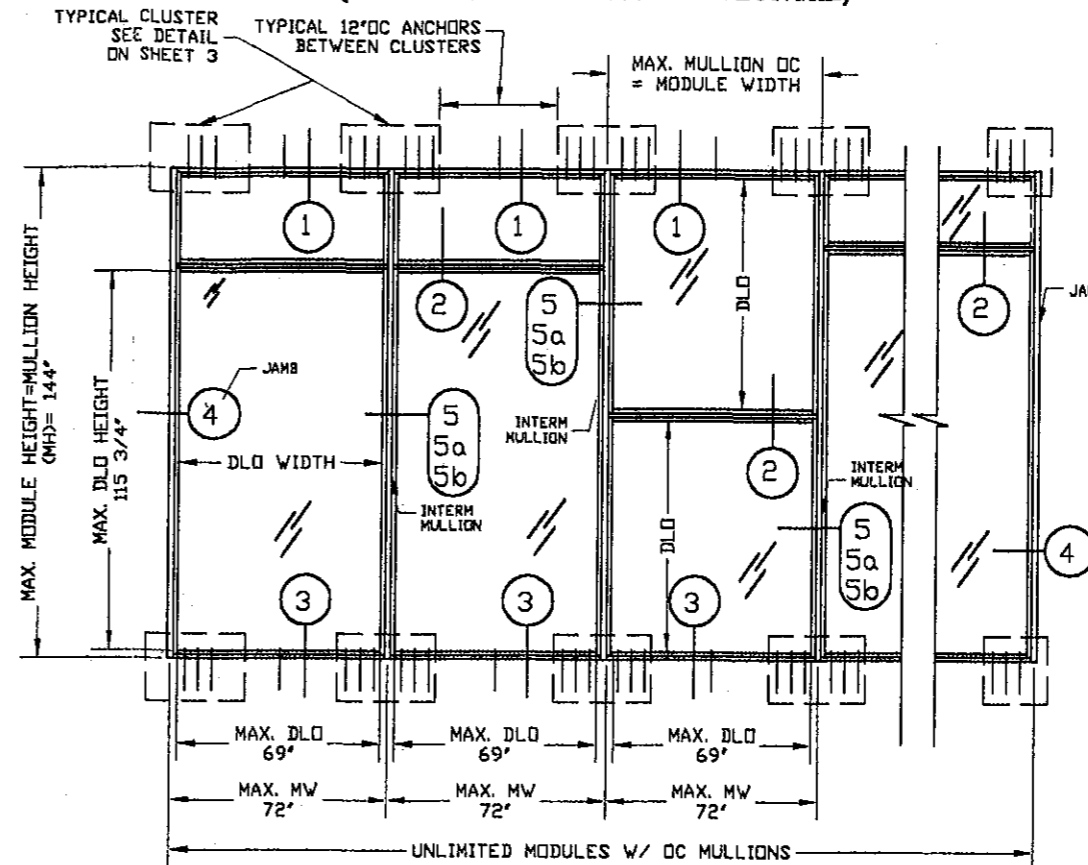
		MODULE HEIGHT									
		36	48	60	72	84	96	108	120	132	144
MODULE WIDTH	48	100	100	100	100	100	100	100	91	68	61
	54	100	100	100	100	100	100	100	83	62	55
	60	100	100	100	100	100	100	96	76	57	51
	72	100	100	100	90	77	68	60	54	49	44

MAXIMUM ALLOWABLE MODULE: 72X144

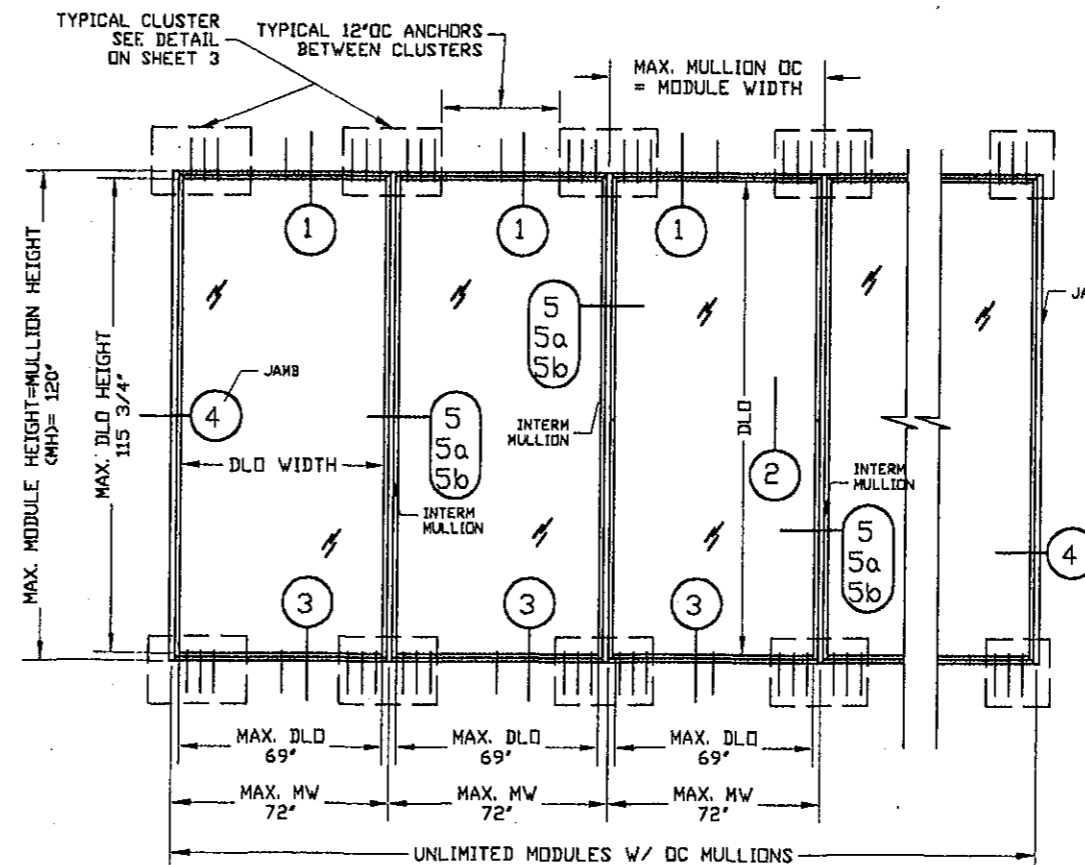
INSTRUCTIONS:

- STEP 1:** - DETERMINE DESIGN WIND LOAD PRESSURES AS PER ITEM 4 OF GENERAL NOTES, SHEET 1.
- STEP 2:** - CHECK MULLION CAPACITY FOR A GIVEN SPACING AND HEIGHT BY USING TABLE 1 (W/OUT REINFORCEMENT), TABLE 2 (W/ STEEL REINF.), TABLE 3 (W/ ALUM. REINFORC) AND TABLE 4 (JAMB MULLION). MULLION CAPACITY MUST NOT EXCEED THE CALCULATED WIND PRESSURE.
- STEP 3:** - CHECK GLASS CAPACITY FOR A GIVEN DLO HEIGHT AND WIDTH BY USING TABLE 6. GLASS CAPACITY MUST NOT EXCEED THE CALCULATED PRESSURE.
- STEP 4:** - CHECK QUANTITY AND TYPE OF ANCHOR TO BE USED FOR A GIVEN MODULE HEIGHT AND MODULE WIDTH FROM TABLE 5, SHEET 3.

**TYPICAL UNIT EXTERIOR ELEVATION
(WITH INTERMEDIATE HORIZONTAL)**



**TYPICAL UNIT EXTERIOR ELEVATION
(WITHOUT INTERMEDIATE HORIZONTAL)**



MANUFACTURER:
Glass America

2590 N. POWERLINE RD.
POMPANO BEACH
FLORIDA - 33069
TEL: (954) 968-5222
FAX: (954) 968-5288

PRODUCT:
**Glass America
Series 5000**

ALUMINUM STOREFRONT

Engineering:
EngCo Inc.
CA 8116
6971 W. Sunrise Blvd. 104
Plantation, FL 33313
Tel.: (954) 585-0304
Fax: (954) 585-0305

APR 03 2006

Pedro De Figueiredo, PE
PE 52609

DRAFTING:
PK DRAFTING & MORE

MIAMI-DADE APPROVAL

PRODUCT RENEWED
as complying with the Florida
Building Code
Acceptance No *06-0219-01*
Expiration Date *05/13/2013*
By *[Signature]*
Miami Dade Product Control
Division

Date: 3/22/06
Scale: 1:3/8
Design by: PPMF

Drawing Number
06-100

Sheet
2 of 4

TYPICAL FRAME ANCHORAGE LAY-OUT

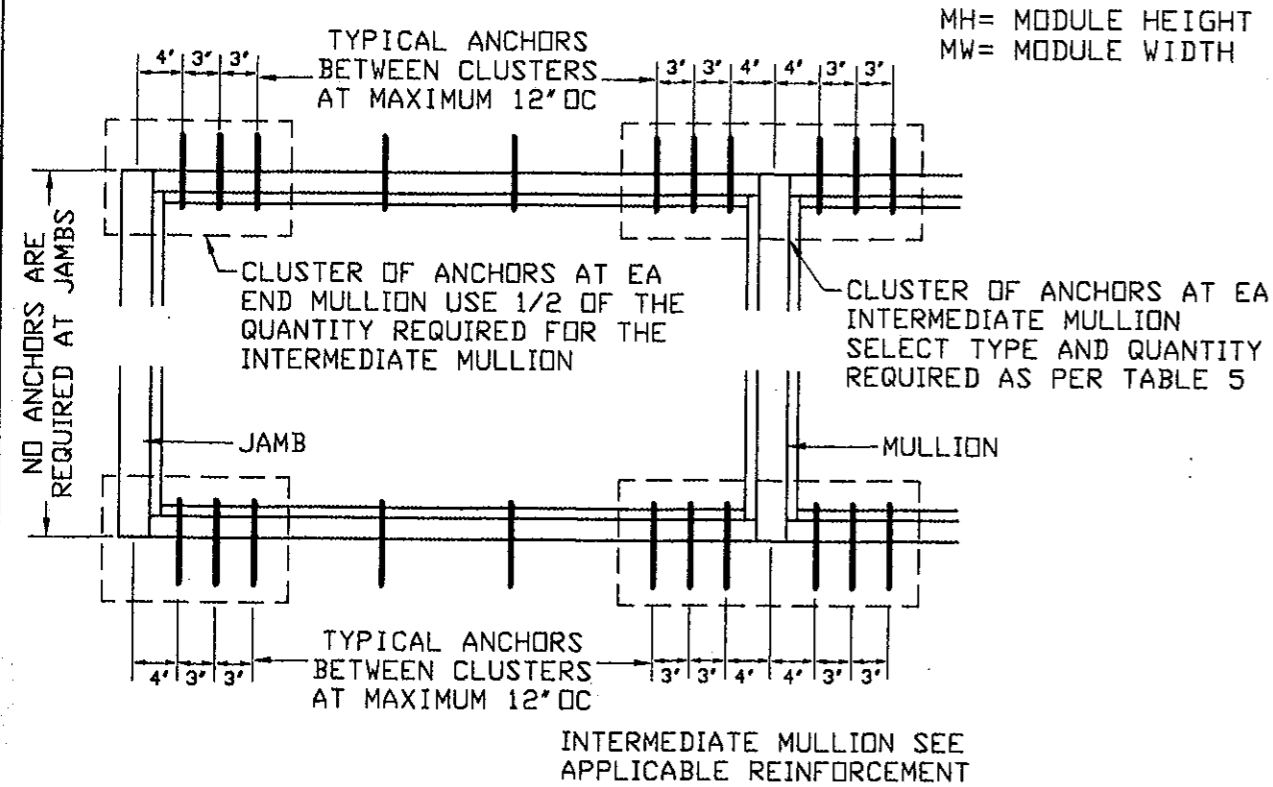


TABLE 5 - ANCHORS SELECTION (INTERMEDIATE MULLION)

ANCHOR TYPE A								
MINIMUM NUMBER OF ANCHOR PER MULLION CLUSTER								
	MODULE HEIGHT (MH)							
MW	60	72	84	96	108	120	132	144
48	6	6	6	8	8	8	6	6
54	6	6	8	8	8	10	6	6
60	6	6	8	8	10	10	8	6
72	6	8	8	8	8	8	8	8

ANCHOR TYPE B or E								
MINIMUM NUMBER OF ANCHOR PER MULLION CLUSTER								
	MODULE HEIGHT (MH)							
MW	60	72	84	96	108	120	132	144
48	6	6	6	6	6	6	6	6
54	6	6	6	6	6	6	6	6
60	6	6	6	6	6	6	6	6
72	6	6	6	6	6	6	6	6

ANCHOR TYPE C								
MINIMUM NUMBER OF ANCHOR PER MULLION CLUSTER								
	MODULE HEIGHT (MH)							
MW	60	72	84	96	108	120	132	144
48	6	6	6	6	6	6	6	6
54	6	6	6	6	6	6	6	6
60	6	6	6	6	6	8	6	6
72	6	6	6	6	6	6	6	6

ANCHOR TYPE D								
MINIMUM NUMBER OF ANCHOR PER MULLION CLUSTER								
	MODULE HEIGHT (MH)							
MW	60	72	84	96	108	120	132	144
48	6	6	6	6	6	6	6	6
54	6	6	6	6	6	6	6	6
60	6	6	6	6	6	6	6	6
72	6	6	6	6	6	6	6	6

MINIMUM QUANTITY OF ANCHORS ARE FUNCTION OF MODULE HEIGHT, MODULE WIDTH AND MAXIMUM ALLOWABLE DESIGNED PRESSURE ON SHEET 2 OF 4.

ANCHOR SCHEDULE (ED = MINIMUM EDGE DISTANCE)

TYPE	DESCRIPTION	EMBEDMENT	SUBSTRATE	ED
A	#14 SS WOOD SCREWS	1 1/2"	PT WOOD (SG) = .55)	3/4"
B	1/4" TAPCONS BY ELCO	1 3/4"	3350 PSI CONCRETE	2 1/2"
C	1/4"-20x 2 1/2" DRIL-FLEX SCREWS		1/8" 6063-T5 ALUMINUM	1/2"
D	1/4"-20x 2 1/2" DRIL-FLEX SCREWS		1/8" ASTM-A36 STEEL	3/8"
E	1/4" CRETE-FLEX SS4 ANCHOR	1 3/4"	3350 PSI CONCRETE	2 1/2"

NOTES:

- 1- ANCHORS B, C, D AND E ARE GRADE 5 AND MANUFACTURED BY ELCO
- 2- ANCHOR A IS A GENERIC STAINLESS STEEL 300 SERIES
- 3- ANCHORS ARE REQUIRED ONLY AT SILL AND HEADER LOCATIONS, JAMBS ARE NOT ANCHORED TO SIDE STRUCTURE. (SEE TYPICAL ANCHOR LAY-OUT)

GLAZING CONFIGURATIONS

MINIMUM 9/16" LAMINATED IMPACT GLASS
1/4" HS GLASS + INTERLAYER + 1/4" HS GLASS

TYPE	BRAND - MANUFACTURER	INTERLAYER
X1	STORMGUARD, BY VIRACON INC.	.09" SAFLEX HP
X2	SAFLEX/KEEPSAFE MAXIMUM, BY SOLUTIA INC.	.09" SAFLEX IIIIG PVB
X3	SENTRY GLASS(R) PLUS, BY E. I. DUPONT DENEMOURS	.09" SENTRYGLAS PLUS

STRUCTURAL GLAZING
SILICONE DOW 995
AND 1/4"x3/8" V2100
FOAMED TAPE

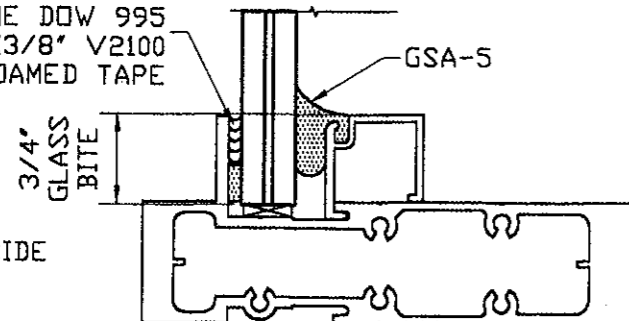


TABLE 6 - GLAZING DESIGN LOAD CAPACITY IN PSF (EXT./INT.) USE IN CONJUNCTION WITH TABLES 1, 2, 3 AND 4 (SEE INSTRUCTIONS ON SHEET 2)

		DLO HEIGHT				
		<=67.75	79.75	91.75	103.75	115.75
DLO WIDTH	45	100	100	100	100	100
	51	100	100	100	100	100
	57	100	100	100	100	100
	69	100	100	100	45	45

MAX. DLO HEIGHT <= 115 3/4"

DLO HEIGHT = MODULE HEIGHT - 4 1/4"
DLO WIDTH = MODULE WIDTH - 3"

MANUFACTURER:
Glass America

2590 N. POWERLINE RD.
POMPANO BEACH
FLORIDA - 33069
TEL: (954) 968-5222
FAX: (954) 968-5288

PRODUCT:
**Glass America
Series 5000**

ALUMINUM STOREFRONT

Engineering:
EngCo Inc.
CA 8116
6971 W. Sunrise Blvd. 104
Plantation, Fl. 33313
Tel.: (954) 585-0304
Fax: (954) 585-0305

APR 03 2006

Pedro De Figueiredo, PE
PE 52609

DRAFTING:
PK DRAFTING & MORE

MIAMI-DADE APPROVAL

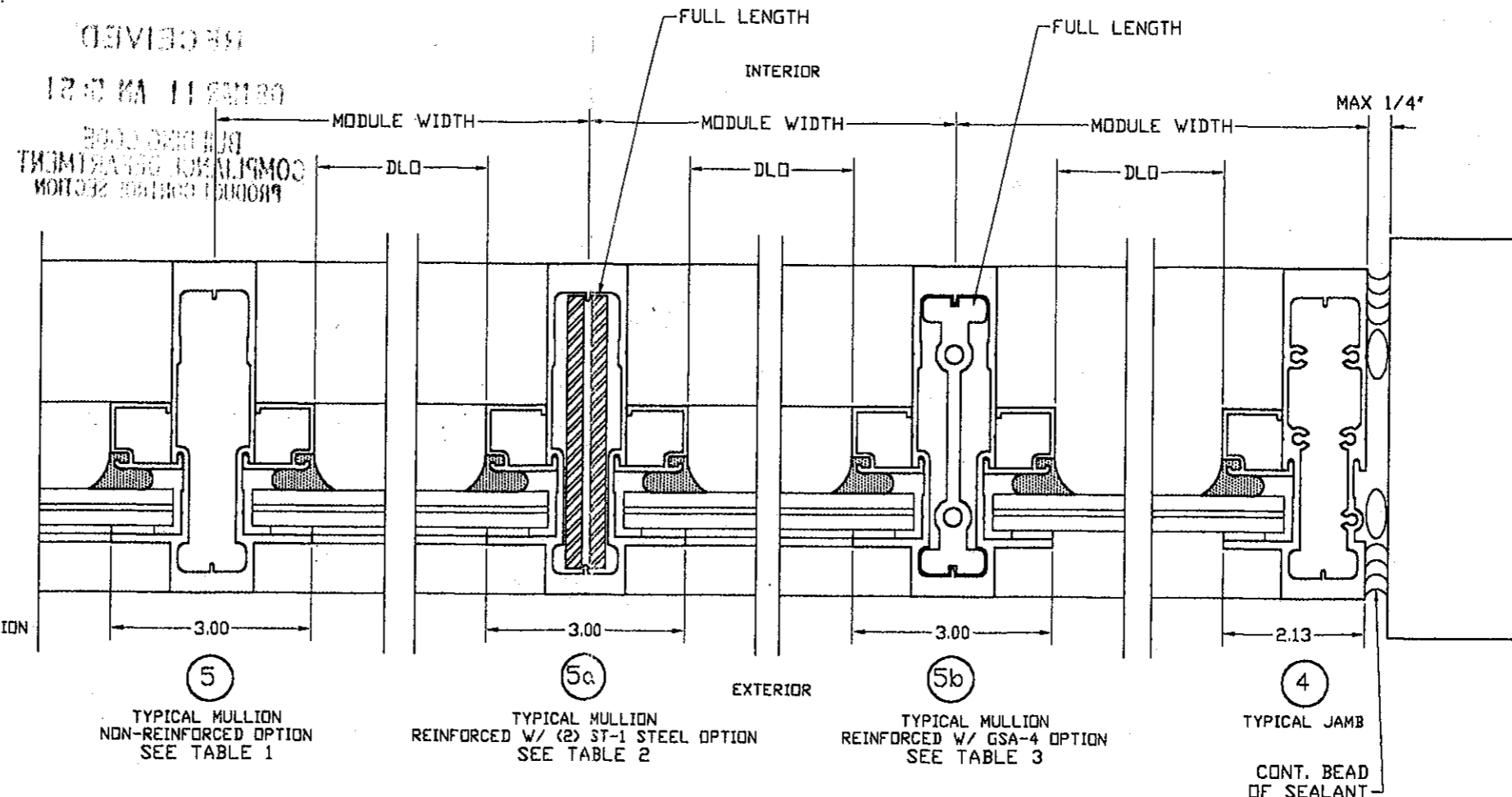
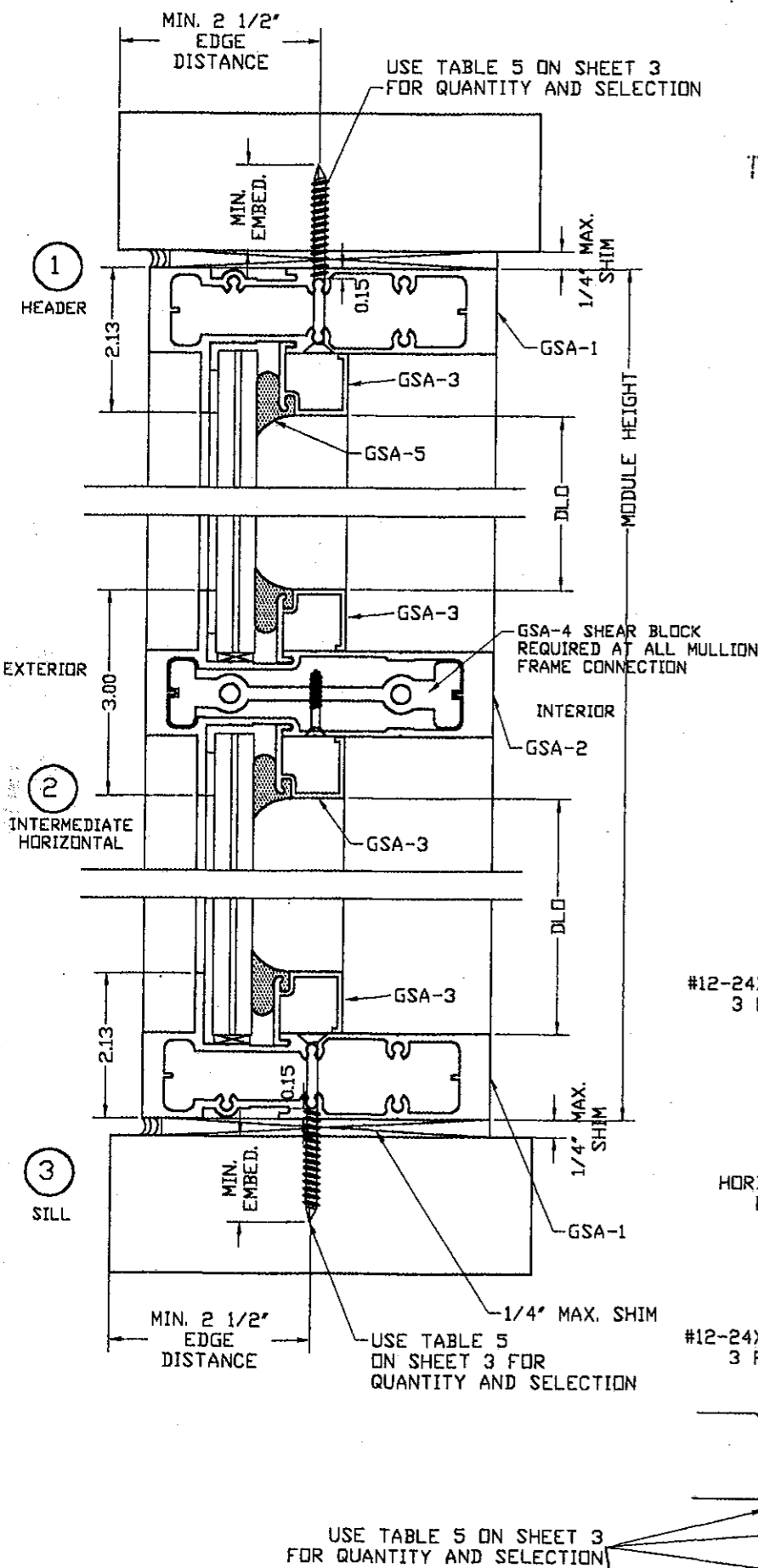
PRODUCT RENEWED
as complying with the Florida
Building Code
Acceptance No 08-0219-01
Expiration Date 05/15/2013
By *[Signature]*
Miami Dade Product Control
Division

Date: 3/22/06
Scale: 1:3/8
Design by: PPMF

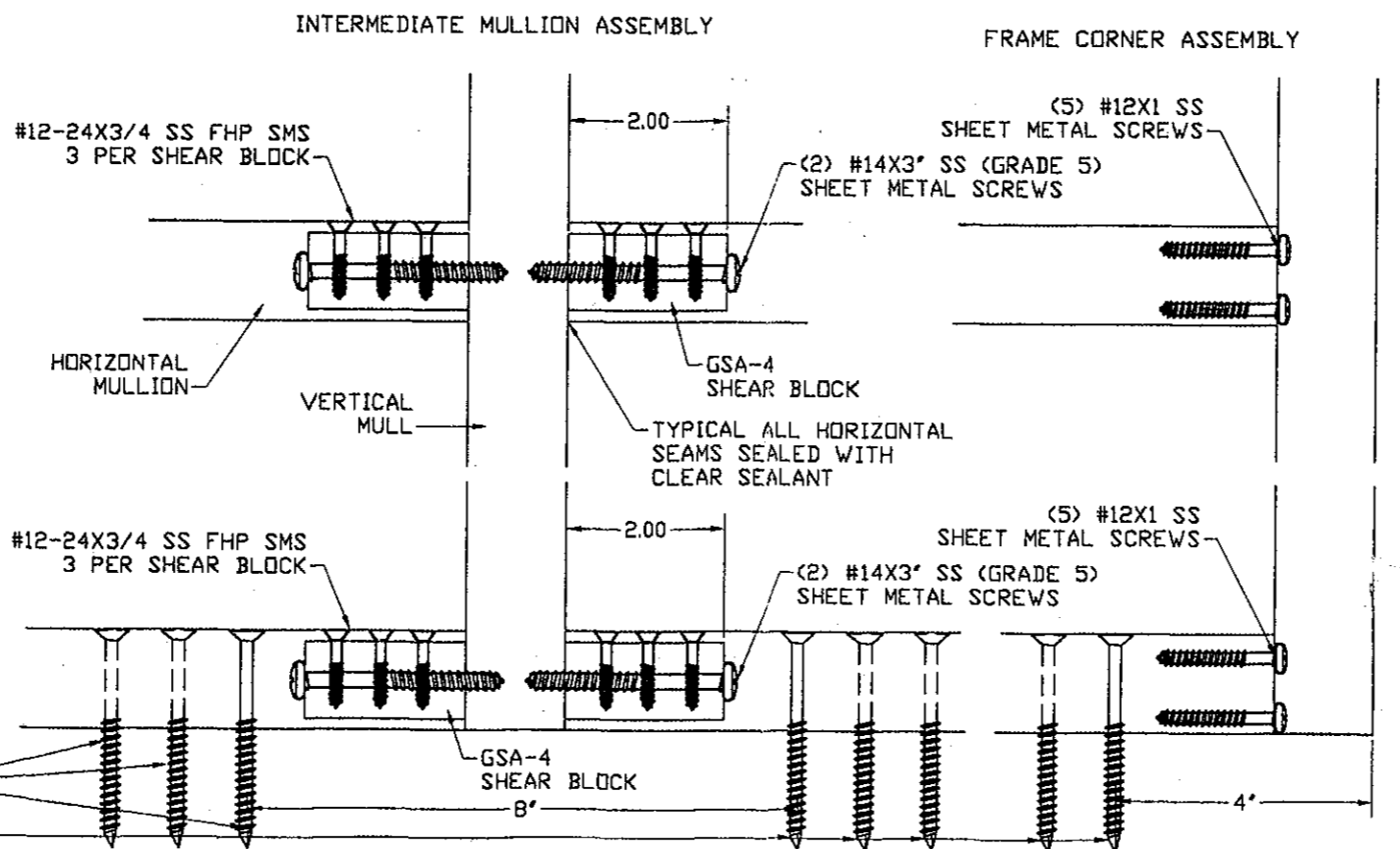
Drawing Number
06-100

Sheet
3 of 4

SECTION DETAILS



FRAME ASSEMBLY



MANUFACTURER:
Glass America
 2590 N. POWERLINE RD.
 POMPANO BEACH
 FLORIDA - 33069
 TEL: (954) 968-5222
 FAX: (954) 968-5288

PRODUCT:
Glass America Series 5000
 ALUMINUM STOREFRONT

Engineering:
EngCo Inc.
 CA 8116
 6971 W. Sunrise Blvd. 104
 Plantation, FL 33313
 Tel.: (954) 585-0304
 Fax: (954) 585-0305

APR 03 2006

Pedro De Figueiredo, PE
 PE 52609

DRAFTING:
PK DRAFTING & MORE

MIAMI-DADE APPROVAL

PRODUCT RENEWED
 as complying with the Florida
 Building Code
 Acceptance No. 08-0217.01
 Expiration Date 05/15/2013

By: *[Signature]*
 Miami Dade Product Control
 Division

Date: 3/22/06
 Scale: 1:3/8
 Design by: PPMF

Drawing Number
 06-100

Sheet
 4 of 4